

# *Sentinel Drivers*



## *Quick Start Guide*

# Index

<b>Topic</b>	<b>Page</b>
<b><u>Wizard Installation</u></b>	<b>2</b>
<b><u>Quite Installation</u></b>	<b>6</b>
<b><u>SuperPro Medic</u></b>	<b>10</b>

**Installation of the Sentinel Drivers can be performed in two ways.**

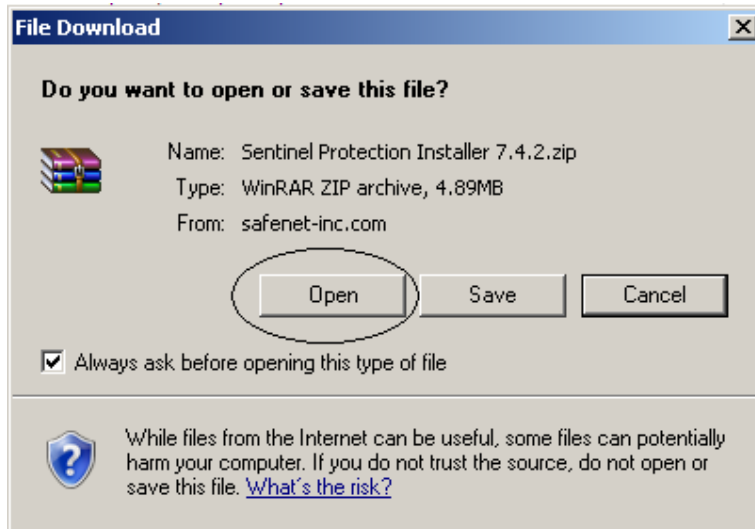
## **A. Using wizard**

The Sentinel Drivers can be downloaded from [www.setupmykey.com](http://www.setupmykey.com)

**1. Click on *Sentinel Driver* to download the latest drivers.**

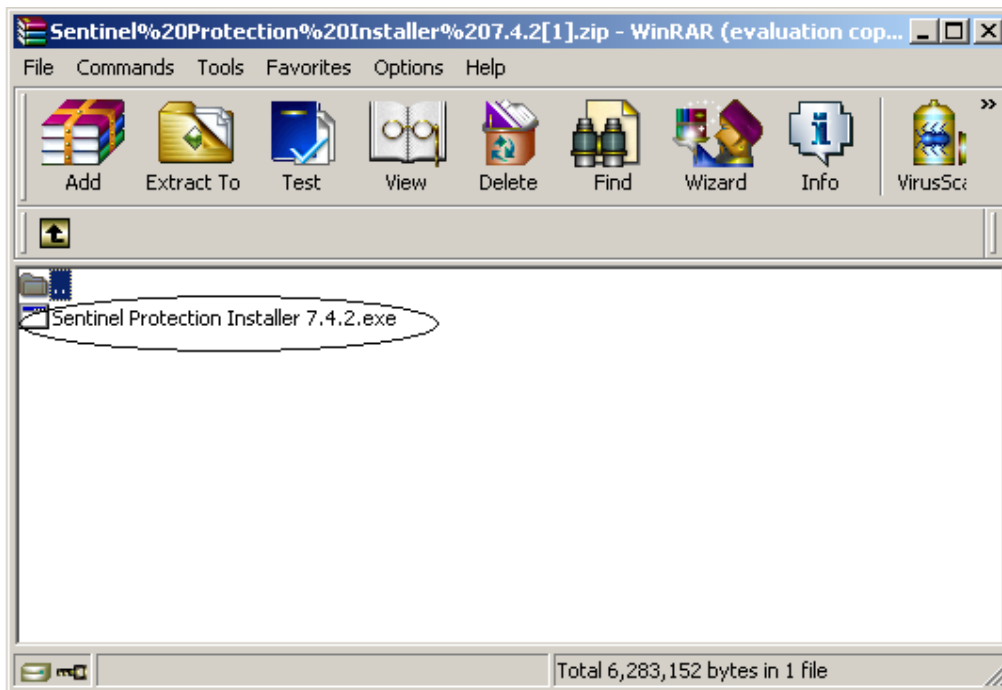


**2. Click Open/Save**



**[HOME](#)**

### 3. Open

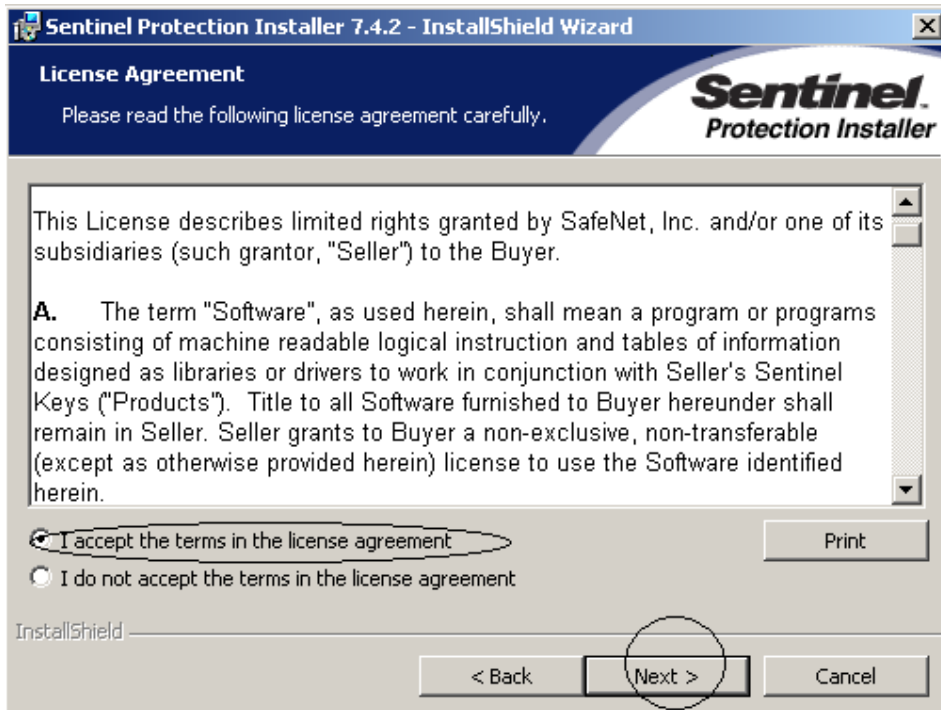


### 4. Double click on Sentinel Protection Installer 7.4.2.exe



[HOME](#)

## 5. Click Next



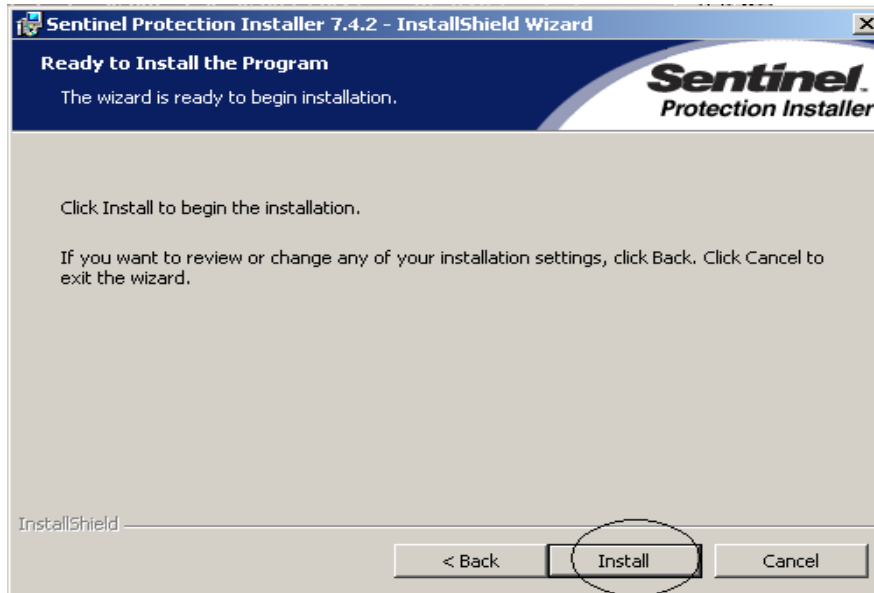
## 6. Click Next



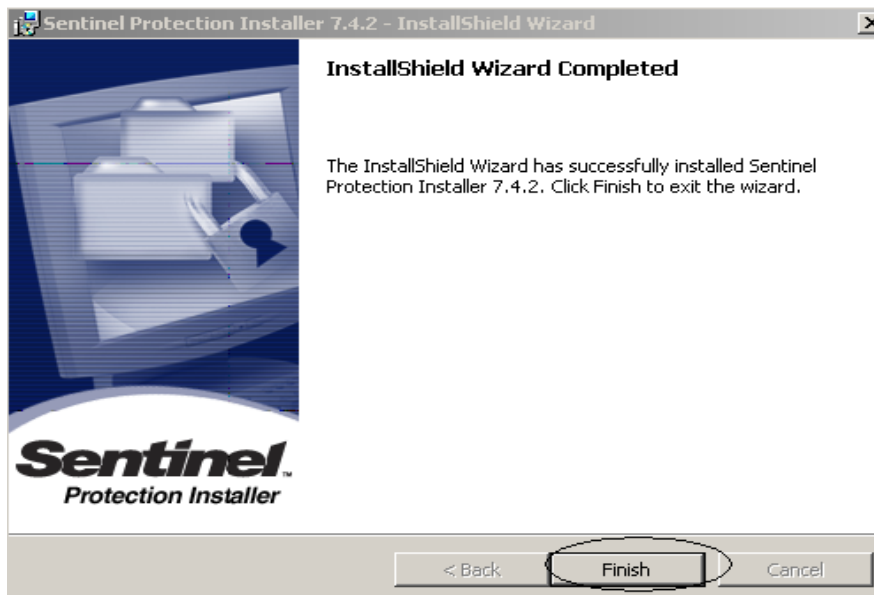
[HOME](#)

## 7. Click Next

This option allows you to install Sentinel System Drivers (parallel driver and USB System Driver). It also installs Sentinel Protection Server and Sentinel Keys Server.



## 8. Click on Install



### **Important!!!**

**Restart the computer once the installation is completed.**

[HOME](#)

## B. Using Quiet installation.

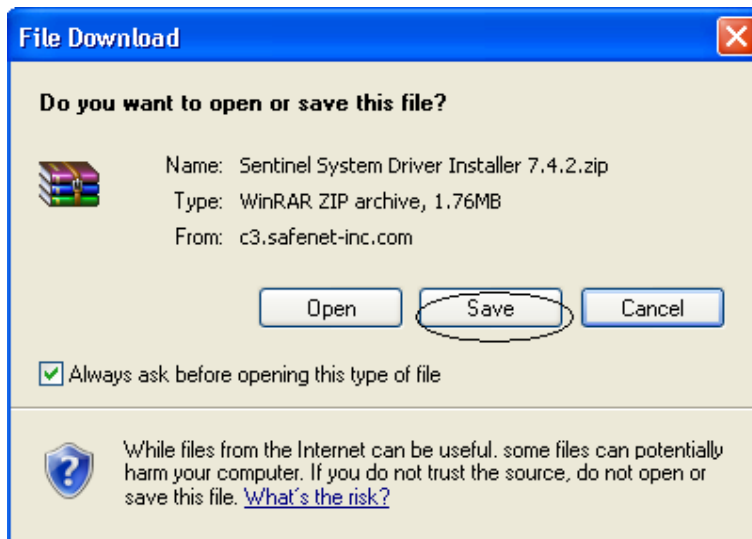
**In order to understand what the quiet mode installation implies you need to be aware that:**

Either during your application's installation or afterward, you can call the Sentinel Protection Installer's *setup.exe* (**Setup = Installer executable file.**) in quiet mode. The installation is run without any noticeable user interaction. Command-line switches are used to do this. This method is very similar to the first method (see guide using wizard on drivers) , except that you call *setup.exe* yourself with the required switches to run without outputting messages (quiet mode).

To install driver using the *setup.exe* in quiet mode you will need about 9MB of free space.

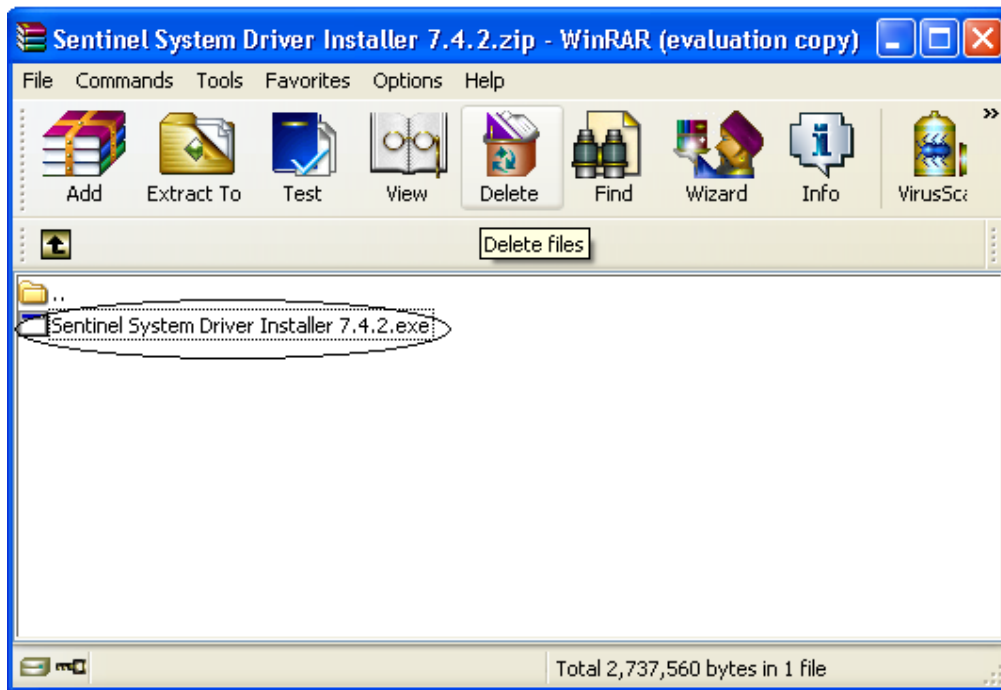
**Please be aware the use of command line to install driver implies that you have administrative rights.**

**1. Download the driver and save it on any location in this case I choose to save the exe on Desktop.**



[HOME](#)

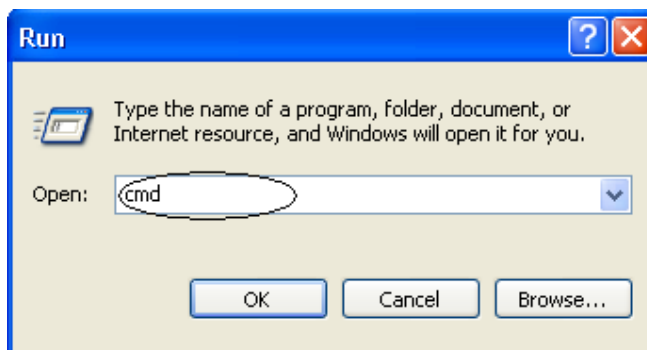
**2. Save the file.**



**3. Copy the .exe to the desktop or any other location and rename it.**



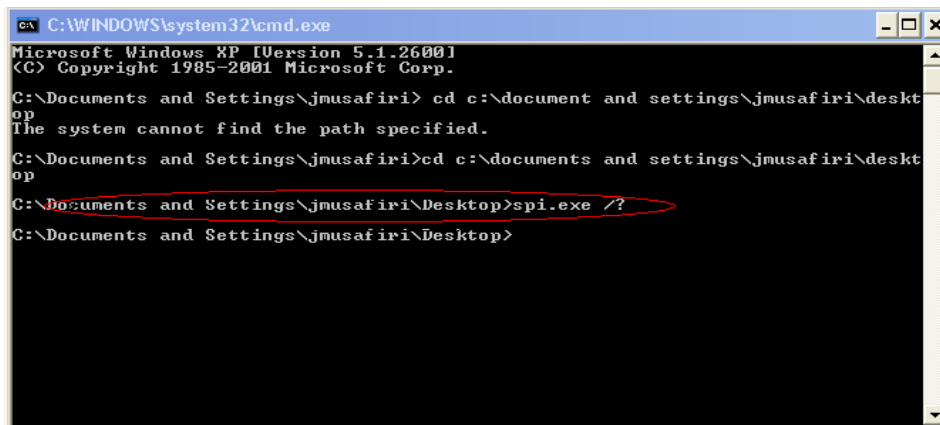
**4. Rename the exe to a short name i.e spi.exe**



[HOME](#)



## 5. Go to start Run>cmd



```
C:\WINDOWS\system32\cmd.exe
Microsoft Windows XP [Version 5.1.2600]
(C) Copyright 1985-2001 Microsoft Corp.
C:\Documents and Settings\jmusafiri> cd c:\document and settings\jmusafiri\desktop
The system cannot find the path specified.
C:\Documents and Settings\jmusafiri>cd c:\documents and settings\jmusafiri\desktop
C:\Documents and Settings\jmusafiri\Desktop>spi.exe /?
C:\Documents and Settings\jmusafiri\Desktop>
```

## 6. Type the Directory including the command line:

At this point you must choose command lines accordingly to your needs please refer to below

(setup = spi.exe)

To install the driver quietly: **setup /v"/q"**

To install the driver quietly but display confirmation message after installation.  
**setup /v"/q+"**

To install the driver quietly upgrade the older driver version and also suppress the Rebooting:  
**setup /s /v"/qb CONFIRMUPGRADE=TRUE, REBOOT=ReallySuppress"**

To install the driver quietly and automatically upgrade any previous version found:  
**setup /v"/qb CONFIRMUPGRADE=TRUE"**

To install just the parallel port driver quietly:  
**setup /v"/qb ADDLOCAL=Parallel\_Driver"**

To install just the Sentinel USB driver quietly:  
**setup /v"/qb ADDLOCAL=USB\_Driver"**

To install the driver normally (with user interaction), but log results:  
**setup /v"/L\* filename.log"**  
(Any previously existing file with the same name will be overwritten.)

To uninstall the driver (confirms uninstall with user):  
**setup /x**

To uninstall quietly:  
**setup /x /v"/q"**

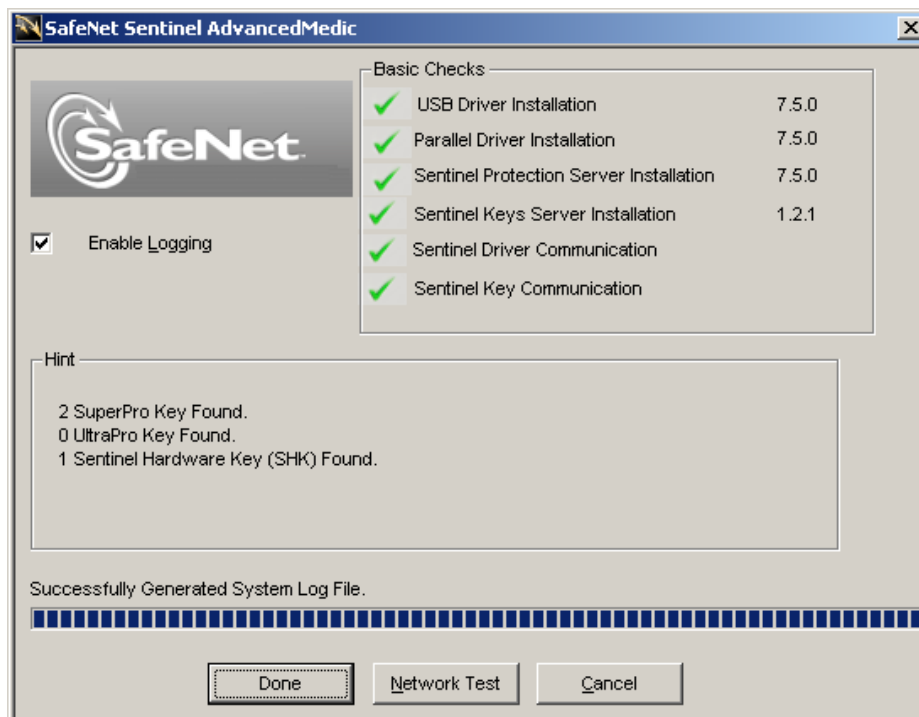
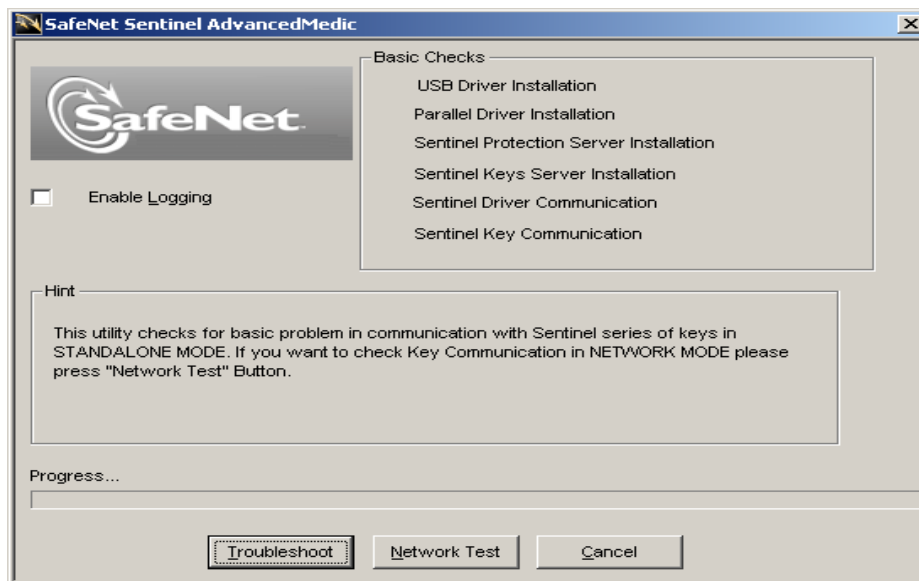
[HOME](#)

## Sentinel Advanced Medic

The Sentinel Advanced Medic (SAM) is a utility that allows you to diagnostic the presence of the Sentinel Drivers and all the Sentinel Dongles.

Please use below link to download and install:

<http://www.safenet-inc.com/support/files/Sam13.exe>



[HOME](#)